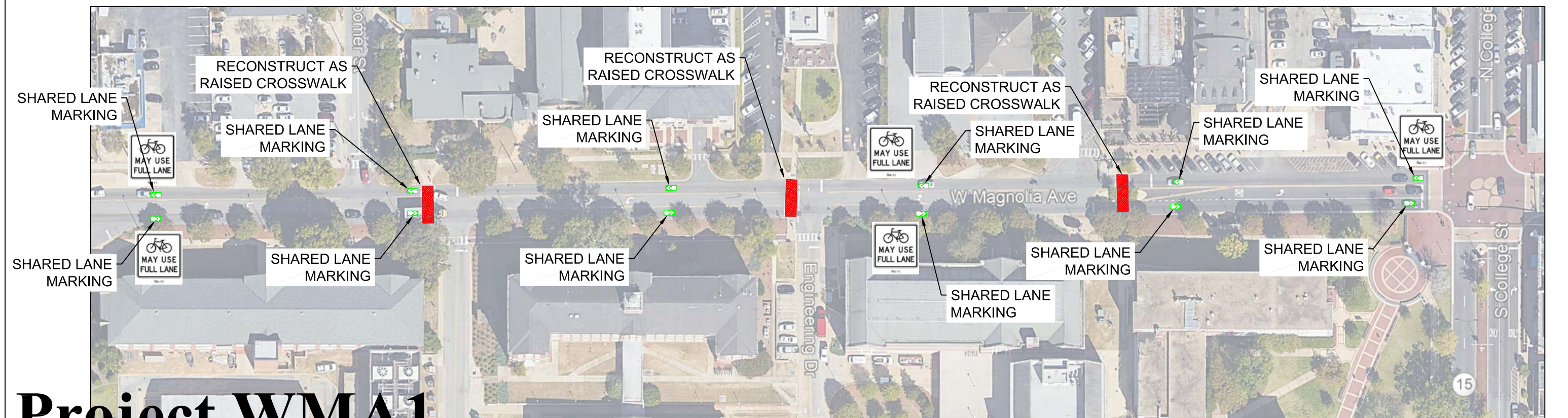
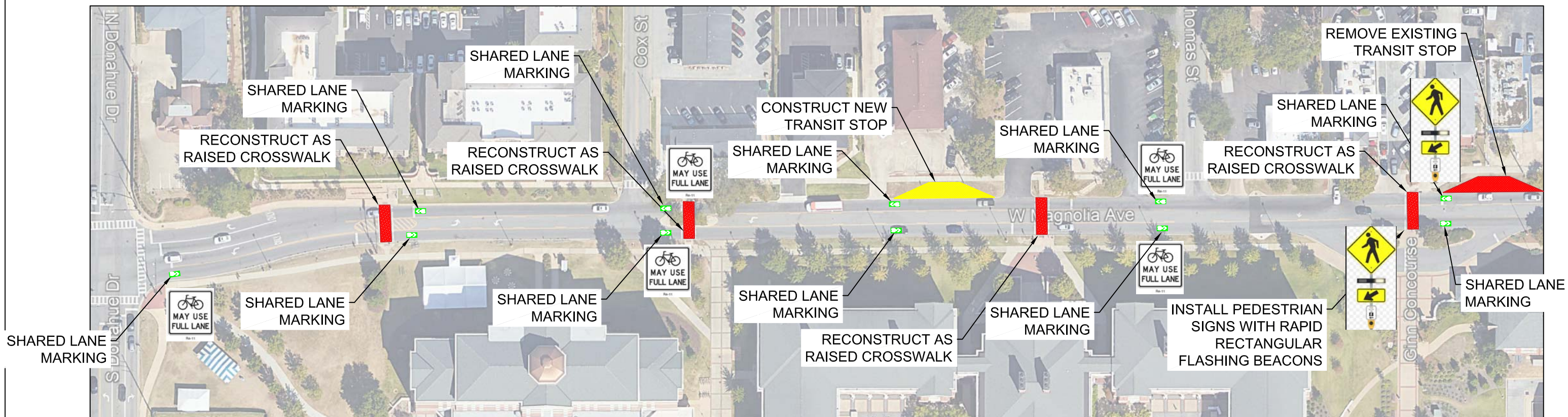


Section 4G:

Recommended
Improvement Projects
Magnolia Avenue





Project WMA1

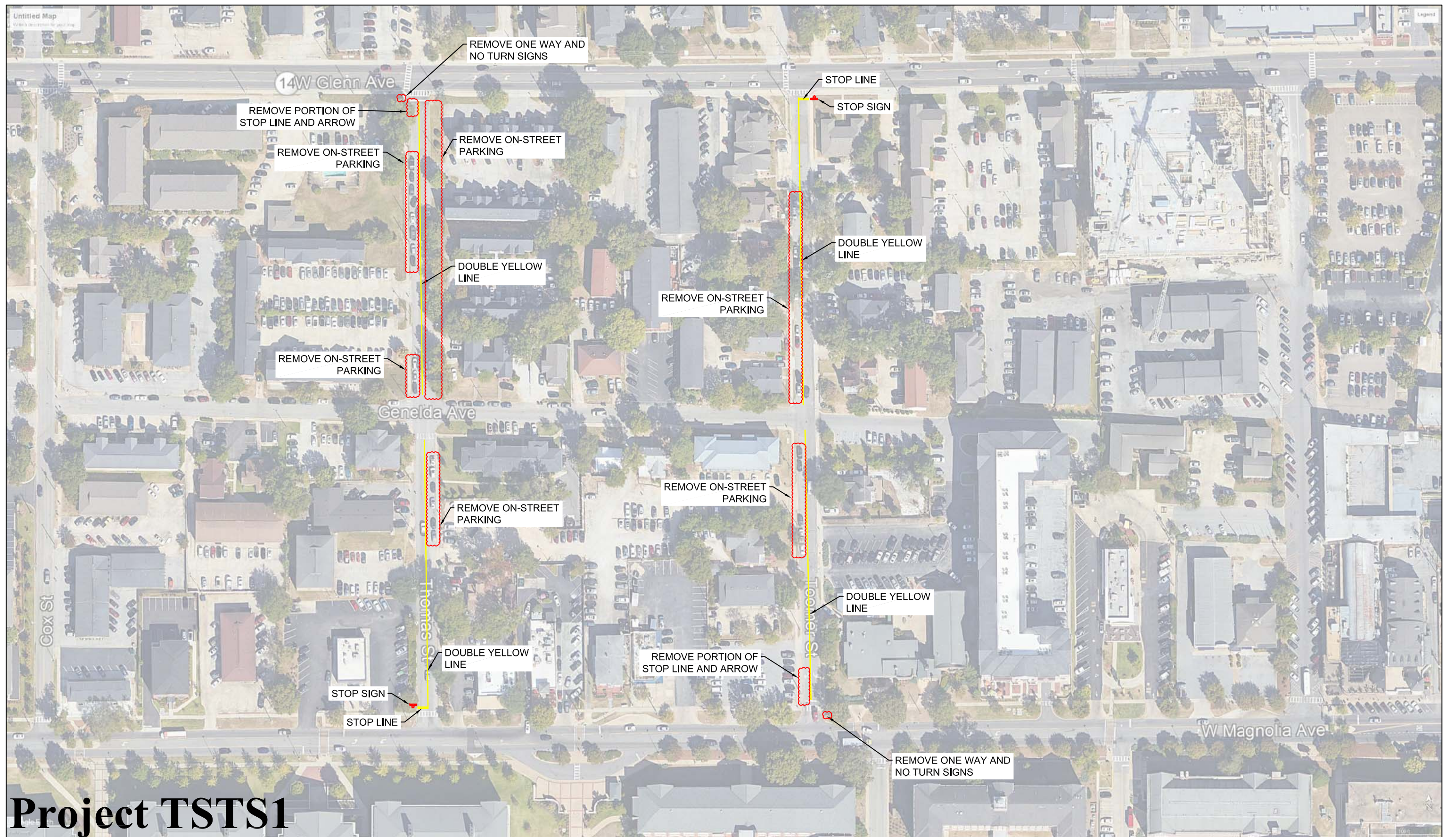


**Figure 9 - Pedestrian Improvements
Magnolia Avenue Corridor
Auburn, Alabama**

LEGEND

- ← AM(PM) Peak Hour Volumes
- ⊗ Study Intersection

Scale: Not to Scale
Date: Feb. 2019



Project TSTS1



**Figure 6 - Two-Way Traffic Conversion
Thomas Street and Toomer Street
Auburn, Alabama**

LEGEND

- AM(PM) Peak Hour Volumes
- Study Intersection

Scale: Not to Scale
Date: Feb. 2019